



Township N. II North, Range N. II West of the 2<sup>nd</sup> Meridian. Surveyed by W. Harris 1816 & Thos. Brown 1816

Description of the Soil in the interior Sectional lines.

Section	Quality &c.	Section	Quality &c.	Section	Quality &c.
31.22	2 <sup>nd</sup> rate Sugar. Spice &c.	23.23	1 <sup>st</sup> & 2 <sup>nd</sup> rate Sugar. Last & 1 <sup>st</sup> rate level	2.23	2 <sup>nd</sup> rate level
30.22	Same	23.22	1 <sup>st</sup> & 2 <sup>nd</sup> rate level	35.26	2 <sup>nd</sup> rate level. Oak. Beech & Hickory
29.22	Same. 1 <sup>st</sup> & 2 <sup>nd</sup> rate level. Sugar. Walnut. Hick.	27.28	1 <sup>st</sup> & 2 <sup>nd</sup> rate level	26.25	2 <sup>nd</sup> rate level. Oak.
19.22	2 <sup>nd</sup> rate level. Sugar. Beech. Hick. Walnut. Maple.	21.28	2 <sup>nd</sup> & 3 <sup>rd</sup> rate level. Oak.	25.26	2 <sup>nd</sup> & 3 <sup>rd</sup> rate level. Same.
18.22	Same	21.22	1 <sup>st</sup> & 2 <sup>nd</sup> rate level. Last & 2 <sup>nd</sup> rate level. Oak.	23.26	1 <sup>st</sup> & 2 <sup>nd</sup> rate level. Oak. Beech. Hick. Walnut. Maple.
17.22	Same	16.21	2 <sup>nd</sup> & 3 <sup>rd</sup> rate level. Oak.	22.26	1 <sup>st</sup> & 2 <sup>nd</sup> rate level. Oak. Beech. Hick. Walnut. Maple.
16.22	Same	15.16	Same. Oak. Beech. Sugar. Maple &c.	21.25	1 <sup>st</sup> & 2 <sup>nd</sup> rate level
15.22	Same	14.16	Same	20.26	1 <sup>st</sup> & 2 <sup>nd</sup> rate level
14.22	Same	13.16	Same	19.26	1 <sup>st</sup> & 2 <sup>nd</sup> rate level
13.22	Same	12.16	Same	18.26	1 <sup>st</sup> & 2 <sup>nd</sup> rate level
12.22	Same	11.16	Same	17.26	1 <sup>st</sup> & 2 <sup>nd</sup> rate level
11.22	Same	10.16	Same	16.26	1 <sup>st</sup> & 2 <sup>nd</sup> rate level
10.22	Same	9.16	Same	15.26	1 <sup>st</sup> & 2 <sup>nd</sup> rate level
9.22	Same	8.16	Same	14.26	1 <sup>st</sup> & 2 <sup>nd</sup> rate level
8.22	Same	7.16	Same	13.26	1 <sup>st</sup> & 2 <sup>nd</sup> rate level
7.22	Same	6.16	Same	12.26	1 <sup>st</sup> & 2 <sup>nd</sup> rate level
6.22	Same	5.16	Same	11.26	1 <sup>st</sup> & 2 <sup>nd</sup> rate level
5.22	Same	4.16	Same	10.26	1 <sup>st</sup> & 2 <sup>nd</sup> rate level
4.22	Same	3.16	Same	9.26	1 <sup>st</sup> & 2 <sup>nd</sup> rate level
3.22	Same	2.16	Same	8.26	1 <sup>st</sup> & 2 <sup>nd</sup> rate level
2.22	Same	1.16	Same	7.26	1 <sup>st</sup> & 2 <sup>nd</sup> rate level
1.22	Same	0.16	Same	6.26	1 <sup>st</sup> & 2 <sup>nd</sup> rate level





**Office of the Monroe County Surveyor**  
**Trohn Enright-Randolph**

---

Health Services Building  
119 West 7<sup>th</sup> Street  
Bloomington, IN 47404  
Phone: (812) 349-2570

Dear User,

The following images were obtained in 2017 by the Office of the Monroe County Surveyor from the State Imaging and Microfilm Laboratory at the Indiana State Archives. The field notes and plats for Owen County are stored on microfilm Reel 4659 at the Indiana State Archives. Each page provided by the State Imaging and Microfilm Laboratory is approximately 18MB. Our office combined the pages by Township & Range and reduced the resulting pdfs. This process may have caused some degradation in quality. We will provide unreduced images of specific pages if required. Please contact us at 812-349-2570 or at [SurveyorsOffice@co.monroe.in.us](mailto:SurveyorsOffice@co.monroe.in.us) to request a higher quality image of any specific page.

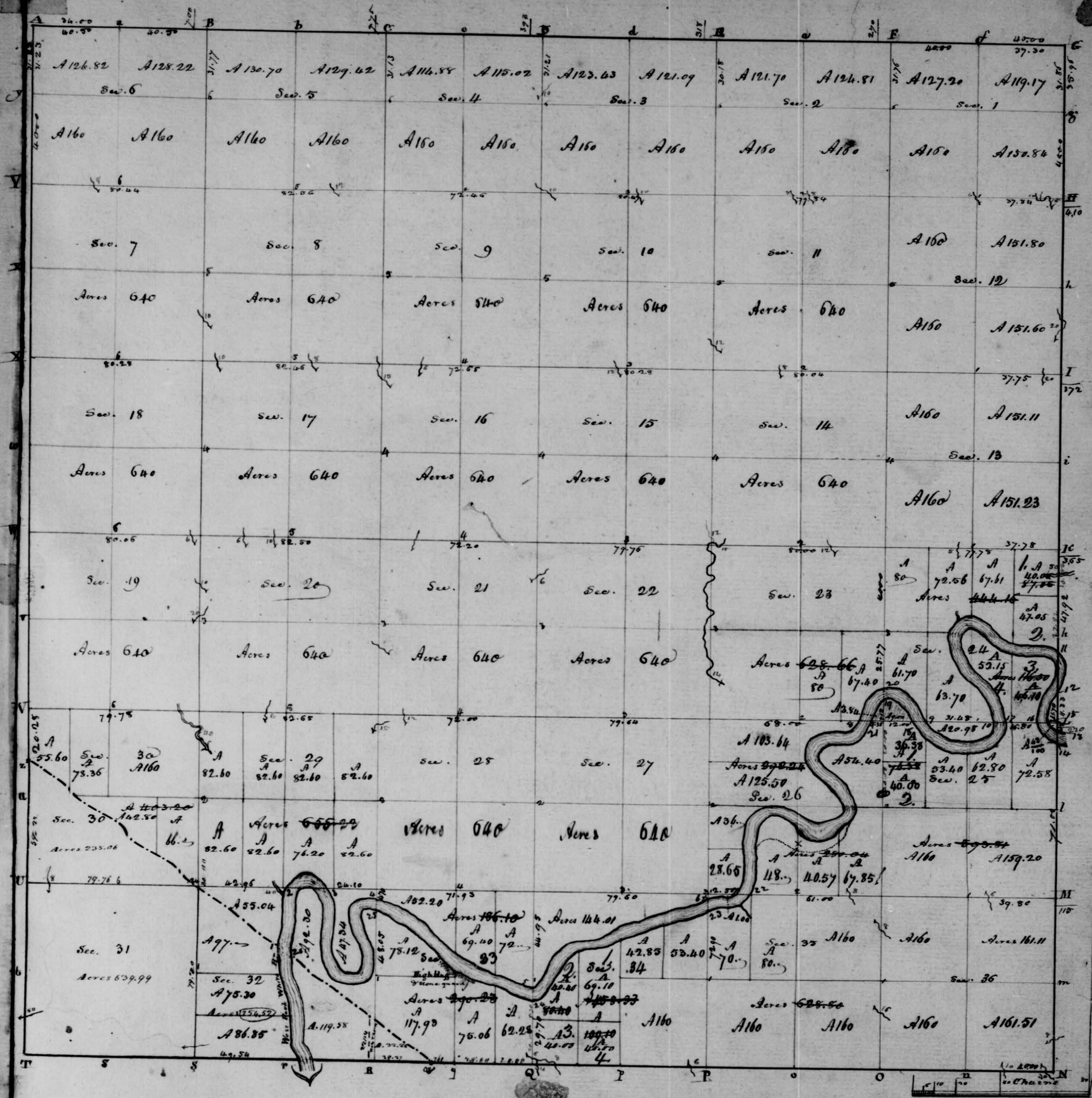
The pdfs are bookmarked with the original page numbers as assigned by the State Imaging and Microfilm Laboratory.

Be prepared to provide the county name, reel number, and the required page numbers when requesting full sized images.

If you would like a DVD of an entire county, please provide us with one DVD per county along with a self-addressed, stamped envelope.

Trohn Enright-Randolph  
Monroe County Surveyor





Township No. 11 North, Range No. 11 West of the 2<sup>nd</sup> Meridian. Surveyed by Wm. Harris 1816 - J. Thos. Brown 1819.

Description of the Soil in the interior Sectional lines.

Section	Quality &c.	Section	Quality &c.	Section	Quality &c.
31.73	2 <sup>nd</sup> rate. Sugar. Spice &c.	33.34	1 <sup>st</sup> & 2 <sup>nd</sup> rate. Sugar. Last & 1 <sup>st</sup> rate level	2.83	2 <sup>nd</sup> rate. Soil
30.31	Same	28.33	1 <sup>st</sup> rate level	35.36	2 <sup>nd</sup> rate. Broken. Oak. Beech & Hickory
29.30	Same. part level & part broken. Sugar. Walnut. Hick.	27.28	1 <sup>st</sup> & 2 <sup>nd</sup> rate level	26.35	2 <sup>nd</sup> rate. Broken
19.30	2 <sup>nd</sup> rate. Broken. Sugar. Beech. Oak. Walnut. Hick.	21.25	2 <sup>nd</sup> & 3 <sup>rd</sup> rate. Broken	25.36	2 <sup>nd</sup> & 3 <sup>rd</sup> rate. Same
18.20	Same	21.22	1 <sup>st</sup> & 2 <sup>nd</sup> rate. Last & 2 <sup>nd</sup> rate. Broken	23.26	1 <sup>st</sup> & 2 <sup>nd</sup> rate. Broken. Last & 2 <sup>nd</sup> rate level
17.19	Same	16.21	2 <sup>nd</sup> & 3 <sup>rd</sup> rate. Broken	24.25	1 <sup>st</sup> & 2 <sup>nd</sup> rate
14.18	Same	15.16	Same. Oak. Beech. Sugar. Poplar &c.	23.24	1 <sup>st</sup> rate level
13.17	Same	9.16	Same	14.23	1 <sup>st</sup> & 2 <sup>nd</sup> rate level
12.16	Same	9.10	Same	13.24	Same
5.16	Same	4.9	Same	13.14	1 <sup>st</sup> & 2 <sup>nd</sup> rate level. Last & 2 <sup>nd</sup> rate. Broken
32.33	1 <sup>st</sup> rate level. Walnut. Hickory. Buckeye. Spruce	34.35	1 <sup>st</sup> rate level. Walnut. Hickory. Buckeye. Spruce	11.14	2 <sup>nd</sup> rate. Broken
29.32	2 <sup>nd</sup> rate. Broken	27.34	Same	12.13	2 <sup>nd</sup> & 3 <sup>rd</sup> rate. Broken
28.29	2 <sup>nd</sup> rate level	26.24	Same	11.12	Same
20.29	2 <sup>nd</sup> rate. Broken	22.24	Same	2.11	Same
20.21	Same	22.23	Same	1.12	Same
17.20	Same	15.22	2 <sup>nd</sup> & 3 <sup>rd</sup> rate. Broken. Oak. Hickory. Beech &c.	1.9	2 <sup>nd</sup> rate. Broken
16.17	Same	14.15	1 <sup>st</sup> & 2 <sup>nd</sup> rate. Broken. Last & 2 <sup>nd</sup> rate level		
8.17	Same	10.15	2 <sup>nd</sup> rate. Broken		
8.9	Same	10.11	2 <sup>nd</sup> & 3 <sup>rd</sup> rate. Same		
5.8	Same	3.10	Same		
4.5	Same				





**Office of the Monroe County Surveyor**  
**Trohn Enright-Randolph**

---

Health Services Building  
119 West 7<sup>th</sup> Street  
Bloomington, IN 47404  
Phone: (812) 349-2570

Dear User,

The following images were obtained in 2017 by the Office of the Monroe County Surveyor from the State Imaging and Microfilm Laboratory at the Indiana State Archives. The field notes and plats for Morgan County are stored on microfilm Reel 7534 at the Indiana State Archives. Each page provided by the State Imaging and Microfilm Laboratory is approximately 18MB. Our office combined the pages by Township & Range and reduced the resulting pdfs. This process may have caused some degradation in quality. We will provide unreduced images of specific pages if required. Please contact us at 812-349-2570 or at [SurveyorsOffice@co.monroe.in.us](mailto:SurveyorsOffice@co.monroe.in.us) to request a higher quality image of any specific page.

The pdfs are bookmarked with the original page numbers as assigned by the State Imaging and Microfilm Laboratory.

Be prepared to provide the county name, reel number, and the required page numbers when requesting full sized images.

If you would like a DVD of an entire county, please provide us with one DVD per county along with a self-addressed, stamped envelope.

Trohn Enright-Randolph  
Monroe County Surveyor